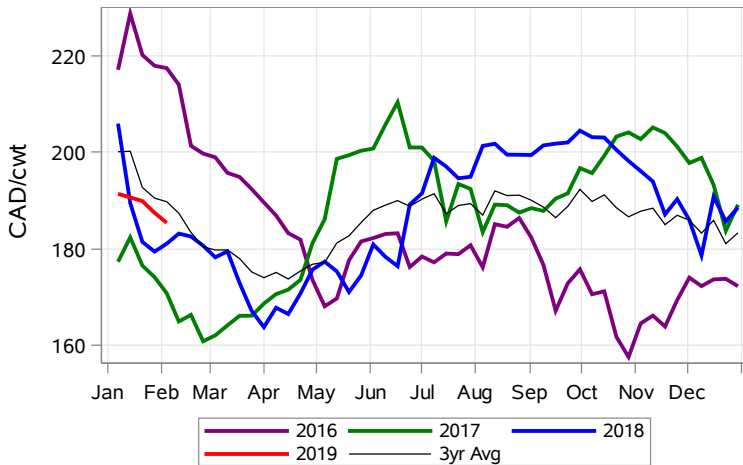


While many factors influence livestock prices, the following are some of the key market indicators that may be helpful when making your WCPIP purchasing decisions.

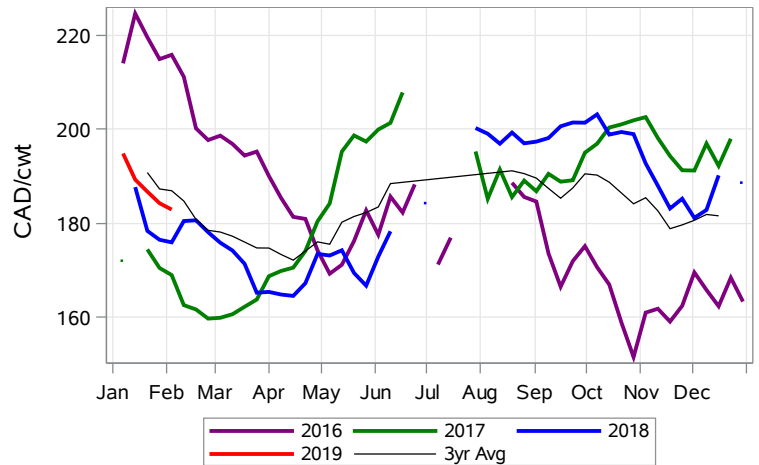
**Feeder Settlement Index (Week of Feb 4)**



**Feeder Alberta Settlement Index (Week of Feb 4)**



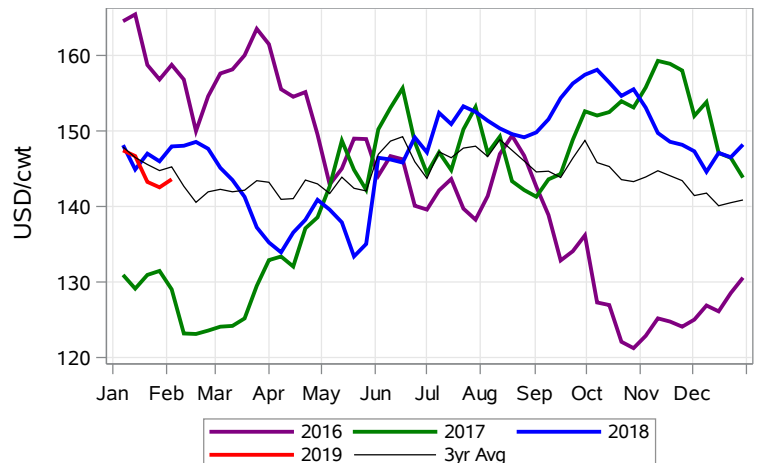
**Feeder SaskMan Settlement Index (Week of Feb 4)**



**Nearby Feeder Futures Price (Week of Feb 4)**



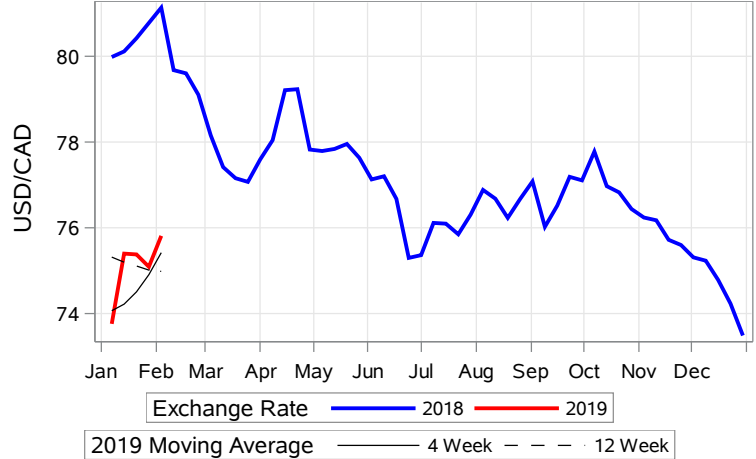
**Nearby Feeder Futures Price (Week of Feb 4)**



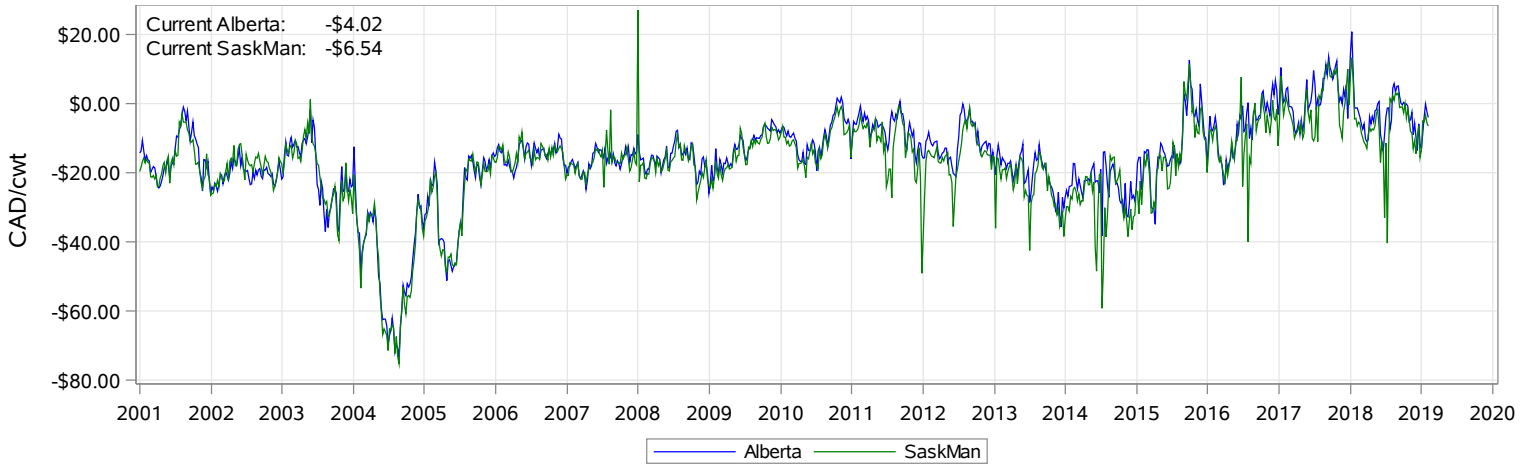
**USD/CAD Exchange Rate**



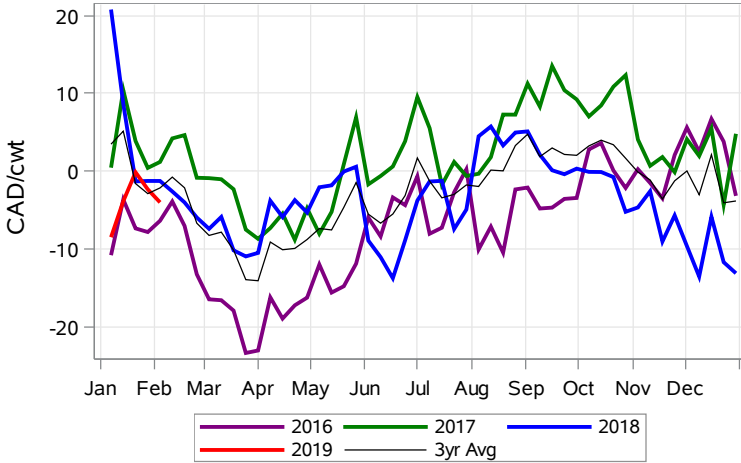
**USD/CAD Exchange Rate with Moving Average**



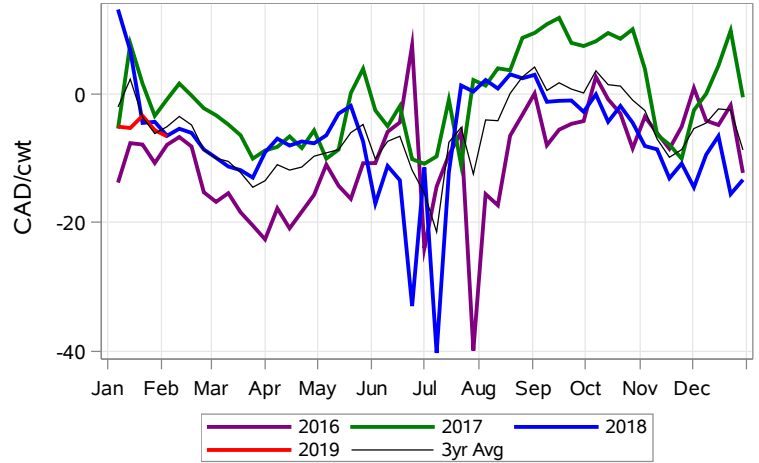
**Feeder Cash to Futures Basis (Week of Feb 4)**



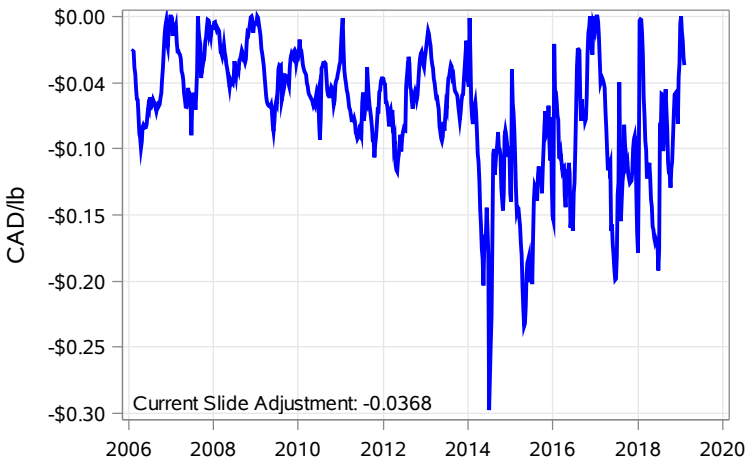
**Feeder Cash to Futures Basis Alberta (Week of Feb 4)**



**Feeder Cash to Futures Basis SaskMan (Week of Feb 4)**



**Slide Adjustment 750-950lbs Alberta (Week of Feb 4)**



**Feeder Slide Adjustment Alberta (Week of Feb 4)**

