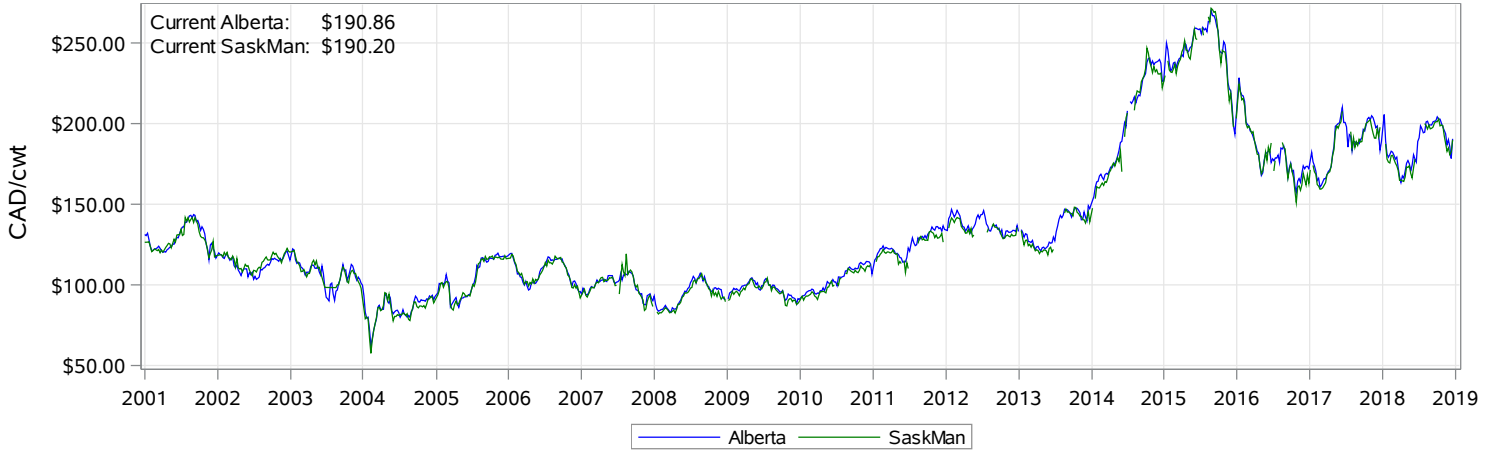
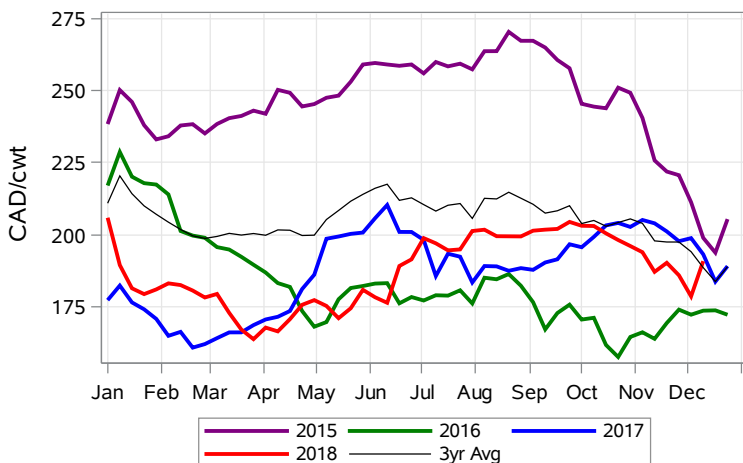


While many factors influence livestock prices, the following are some of the key market indicators that may be helpful when making your WCPIP purchasing decisions.

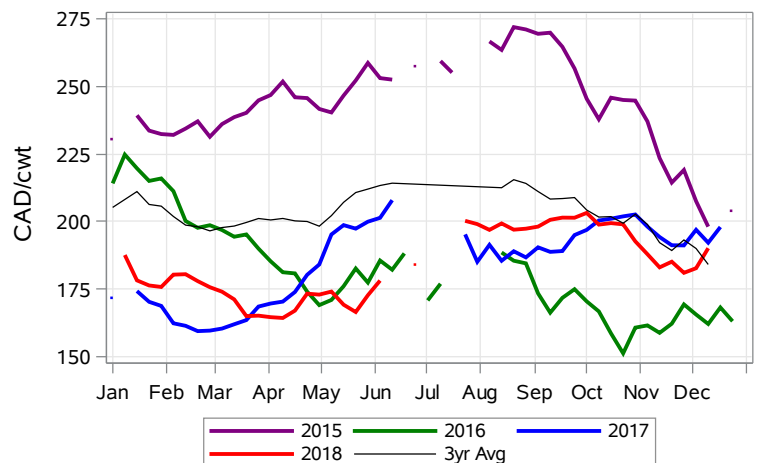
Feeder Settlement Index (Week of Dec 17)



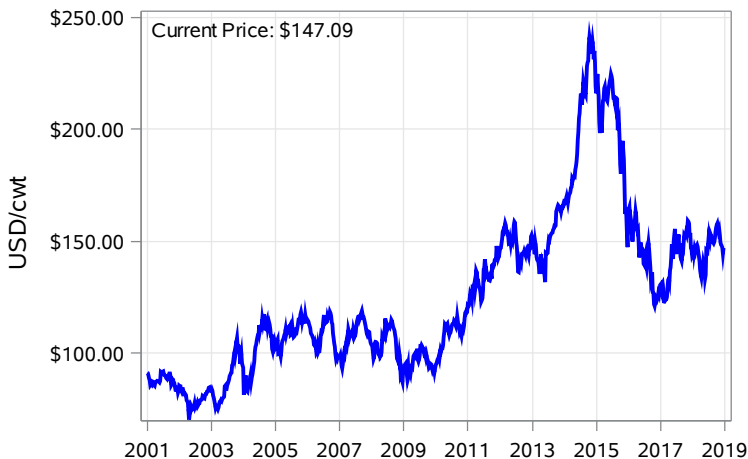
Feeder Alberta Settlement Index (Week of Dec 17)



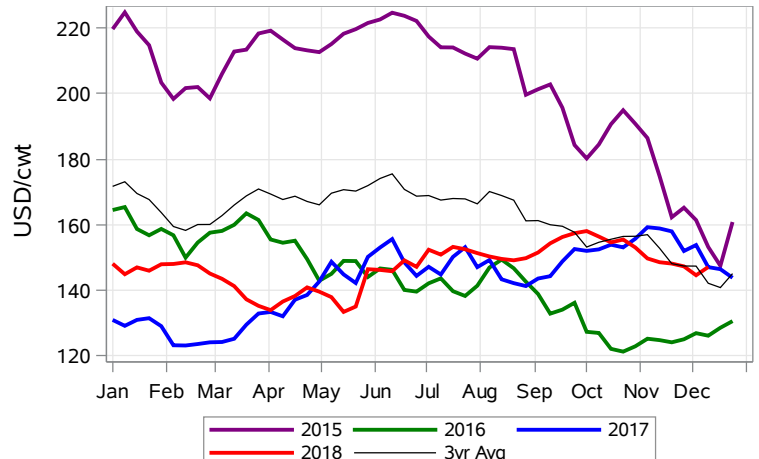
Feeder SaskMan Settlement Index (Week of Dec 17)



Nearby Feeder Futures Price (Week of Dec 17)



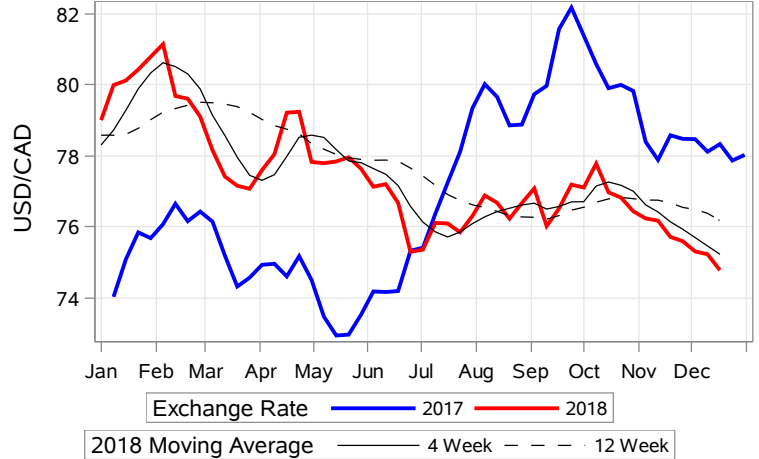
Nearby Feeder Futures Price (Week of Dec 17)



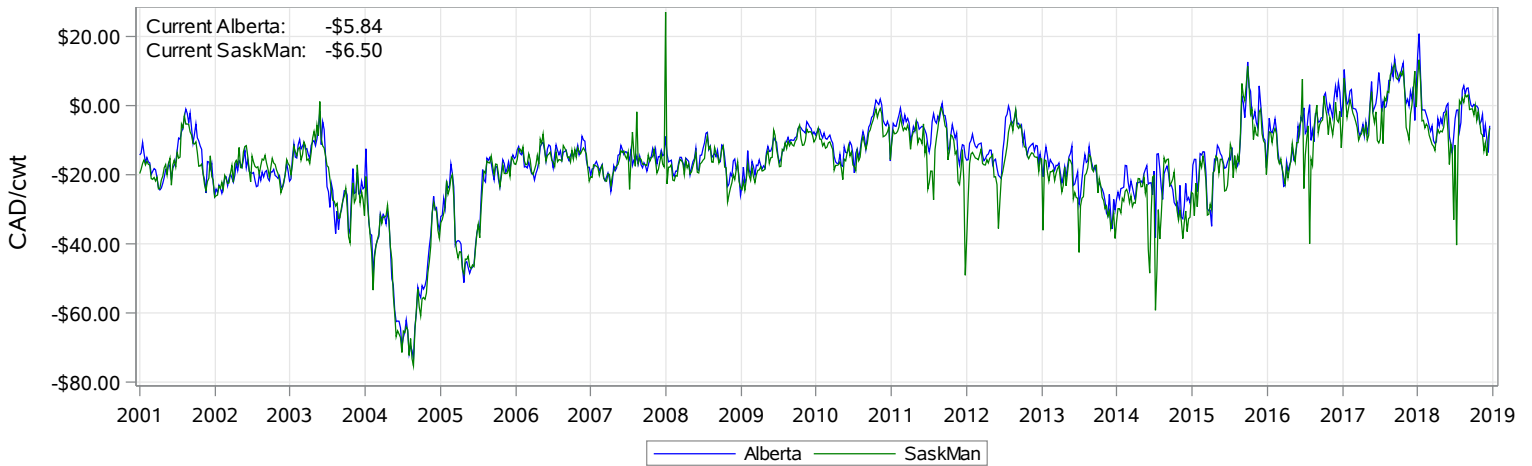
USD/CAD Exchange Rate



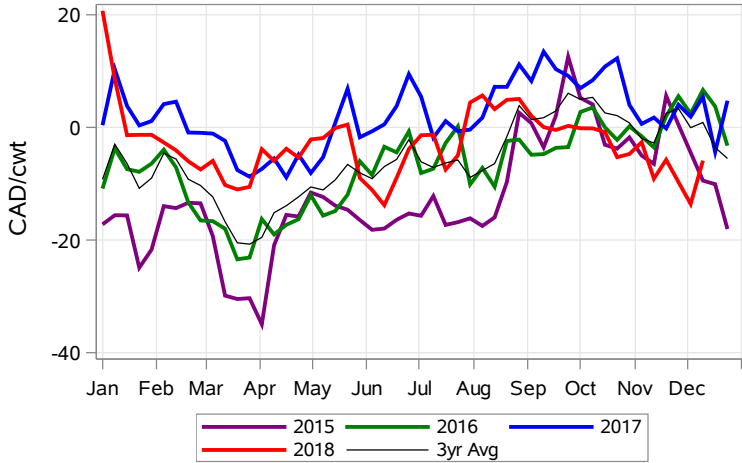
USD/CAD Exchange Rate with Moving Average



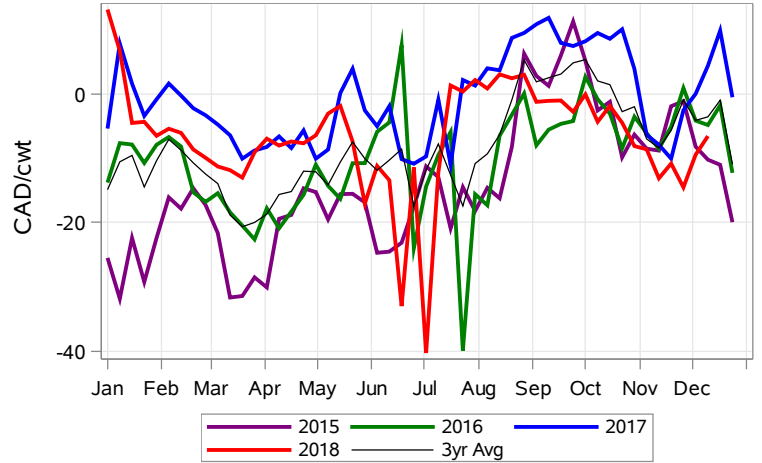
Feeder Cash to Futures Basis (Week of Dec 17)



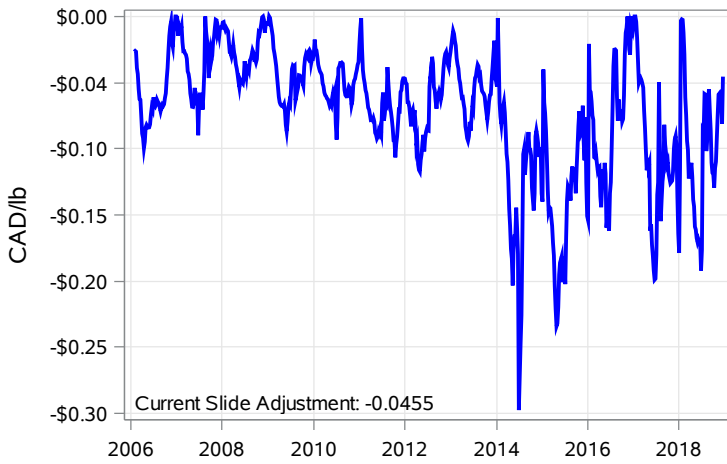
Feeder Cash to Futures Basis Alberta (Week of Dec 17)



Feeder Cash to Futures Basis SaskMan (Week of Dec 17)



Slide Adjustment 750-950lbs Alberta (Week of Dec 17)



Feeder Slide Adjustment Alberta (Week of Dec 17)

