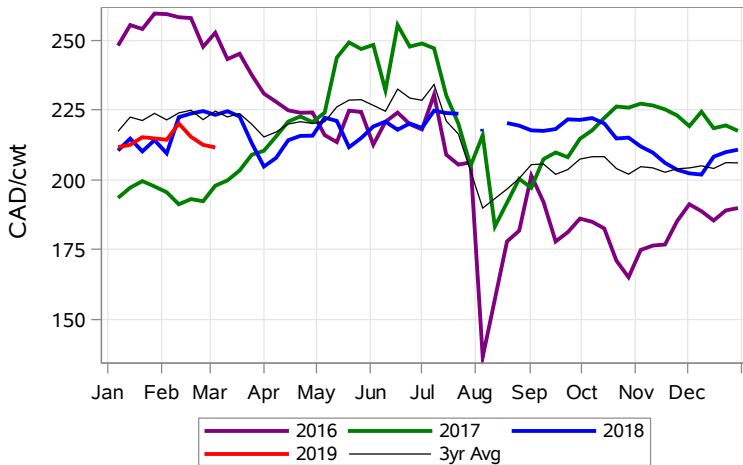


While many factors influence livestock prices, the following are some of the key market indicators that may be helpful when making your WCPIP purchasing decisions.

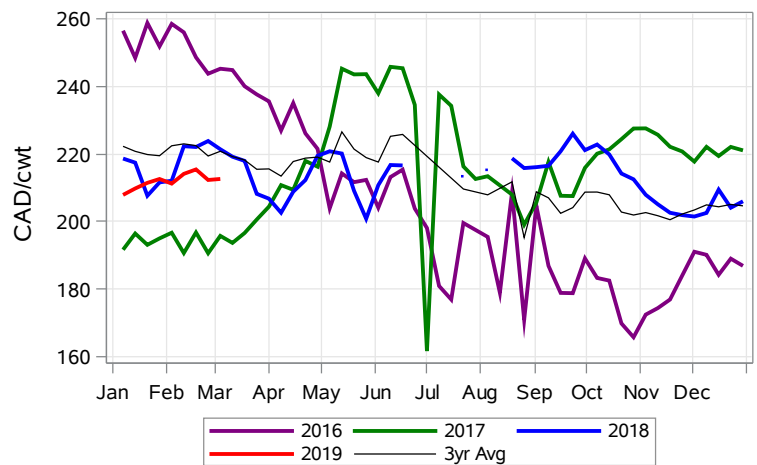
Calf Settlement Index (Week of Mar 4)



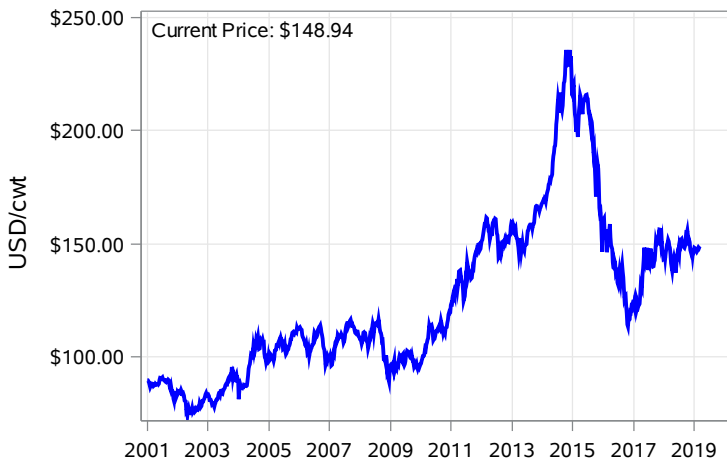
Calf Alberta Settlement Index (Week of Mar 4)



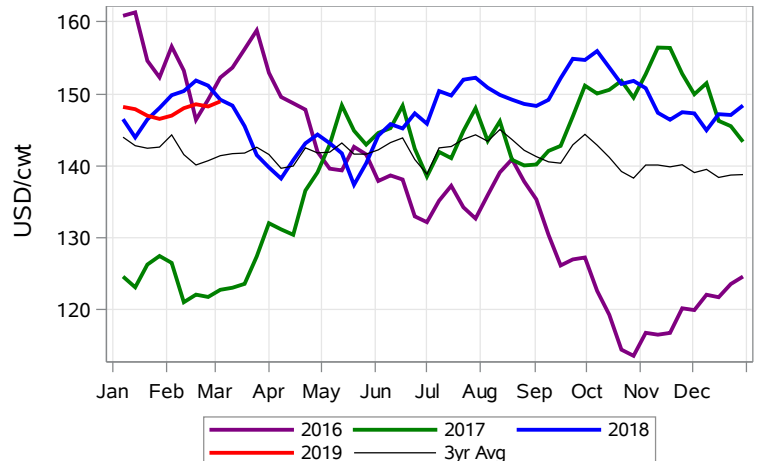
Calf SaskMan Settlement Index (Week of Mar 4)



Nearby Feeder Futures Price (Week of Mar 4)



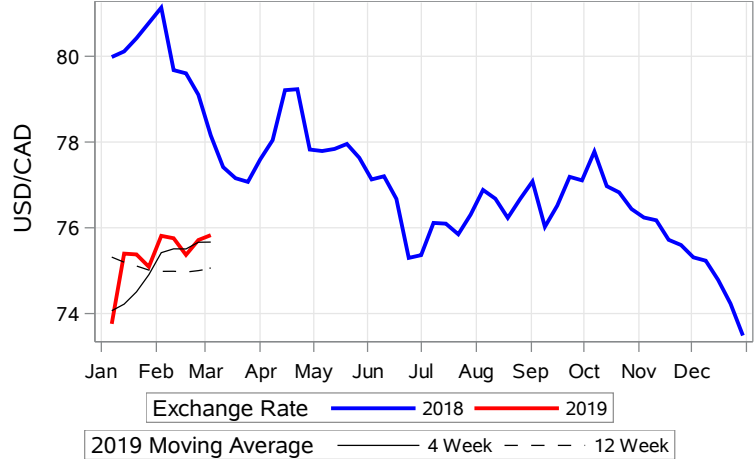
Nearby Feeder Futures Price (Week of Mar 4)



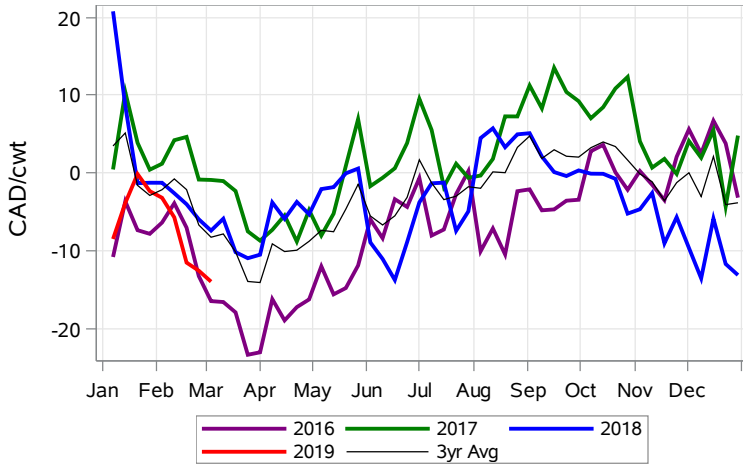
USD/CAD Exchange Rate



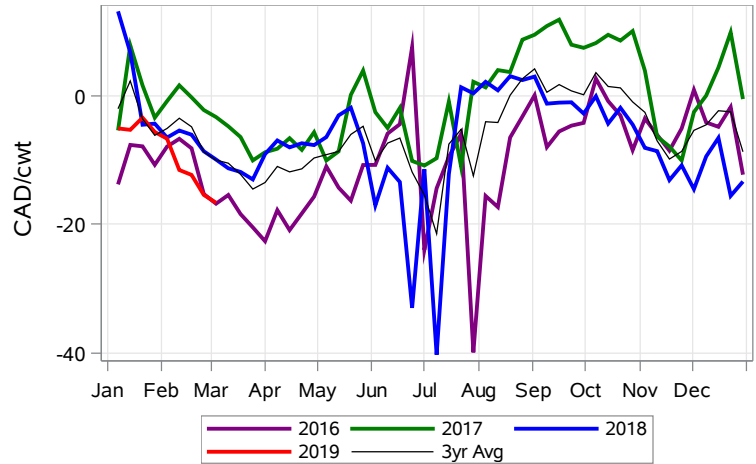
USD/CAD Exchange Rate with Moving Average



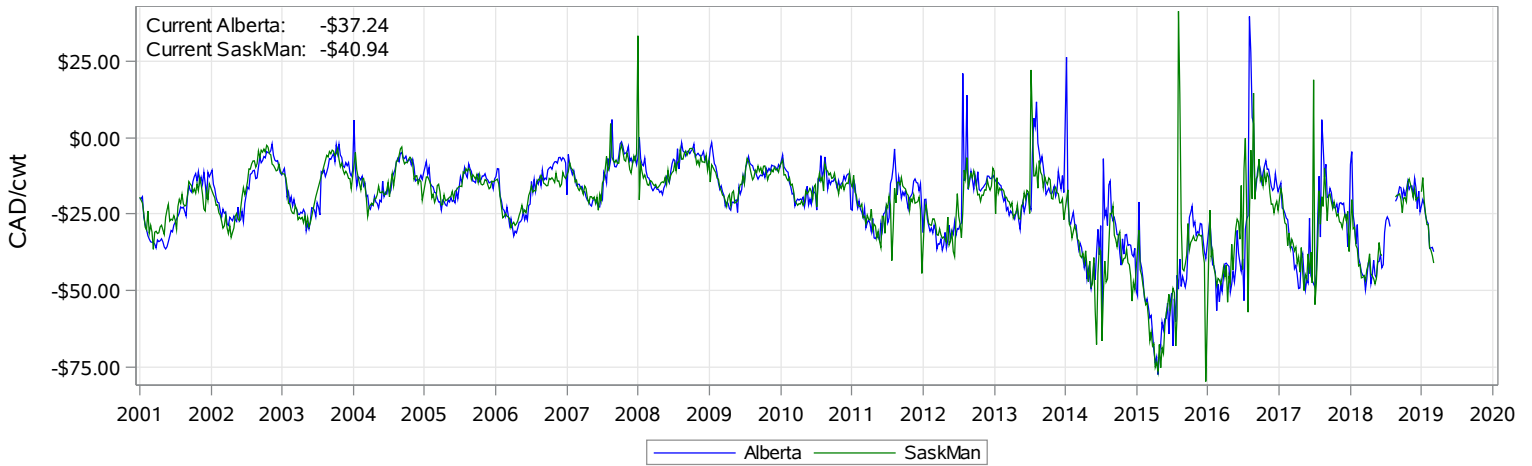
Feeder Cash to Futures Basis Alberta (Week of Mar 4)



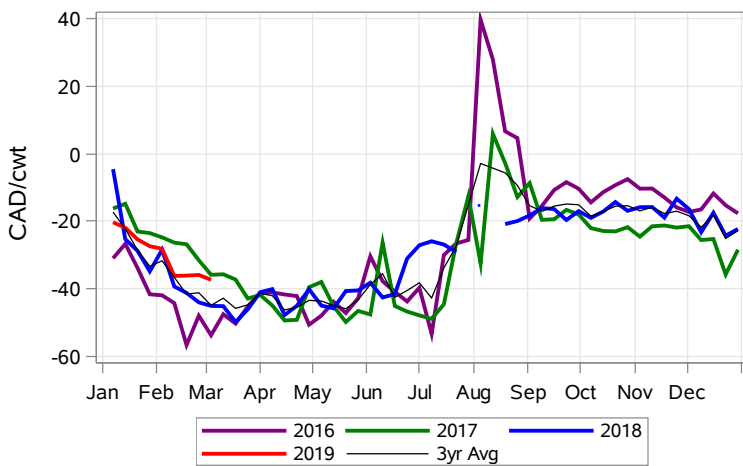
Feeder Cash to Futures Basis SaskMan (Week of Mar 4)



Feeder to Calf Spread (Week of Mar 4)



Feeder to Calf Spread Alberta (Week of Mar 4)



Feeder to Calf Spread SaskMan (Week of Mar 4)

