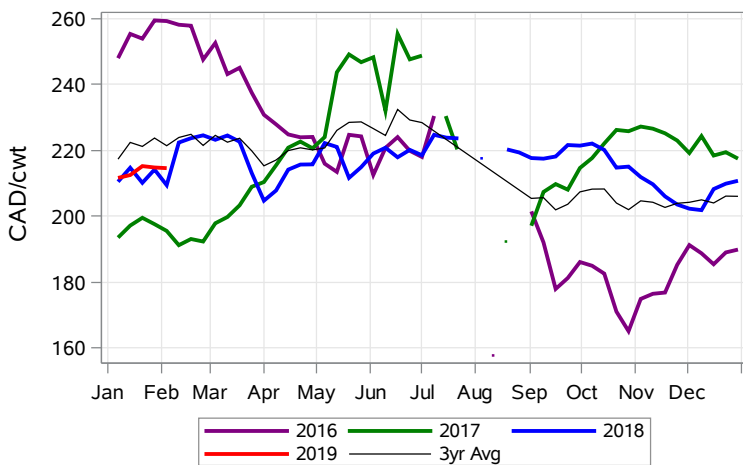


While many factors influence livestock prices, the following are some of the key market indicators that may be helpful when making your WCPIP purchasing decisions.

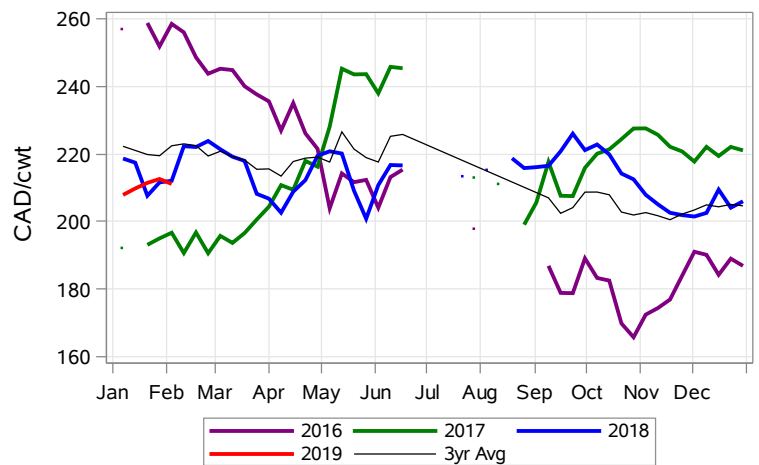
Calf Settlement Index (Week of Feb 4)



Calf Alberta Settlement Index (Week of Feb 4)



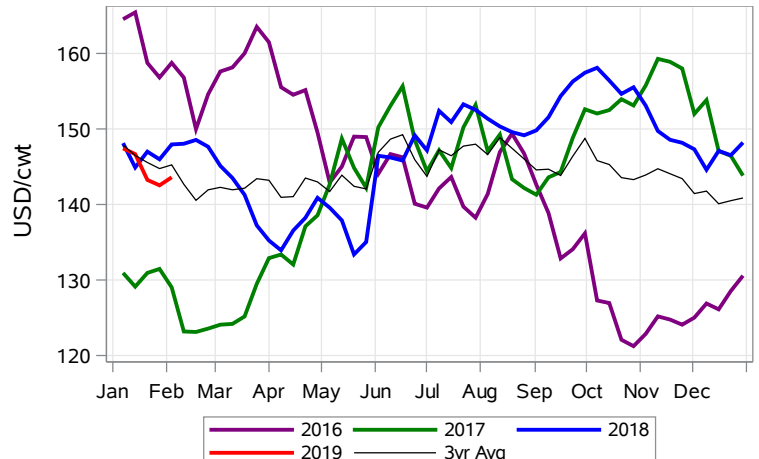
Calf SaskMan Settlement Index (Week of Feb 4)



Nearby Feeder Futures Price (Week of Feb 4)



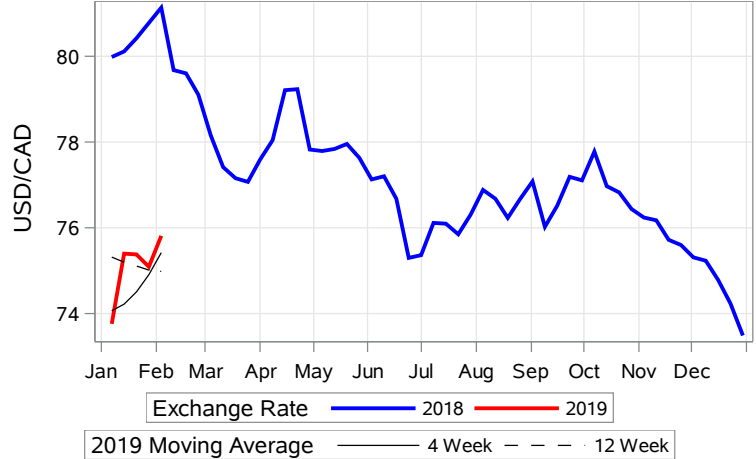
Nearby Feeder Futures Price (Week of Feb 4)



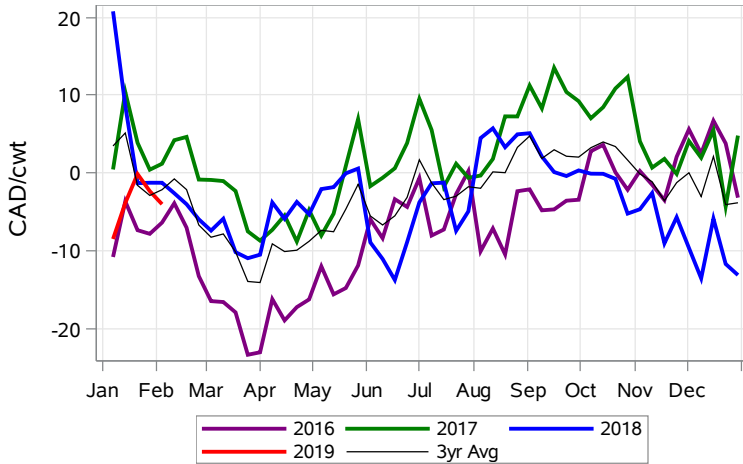
USD/CAD Exchange Rate



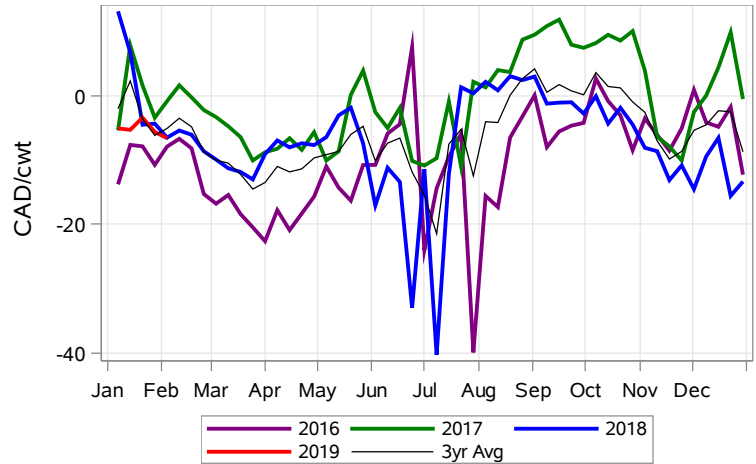
USD/CAD Exchange Rate with Moving Average



Feeder Cash to Futures Basis Alberta (Week of Feb 4)



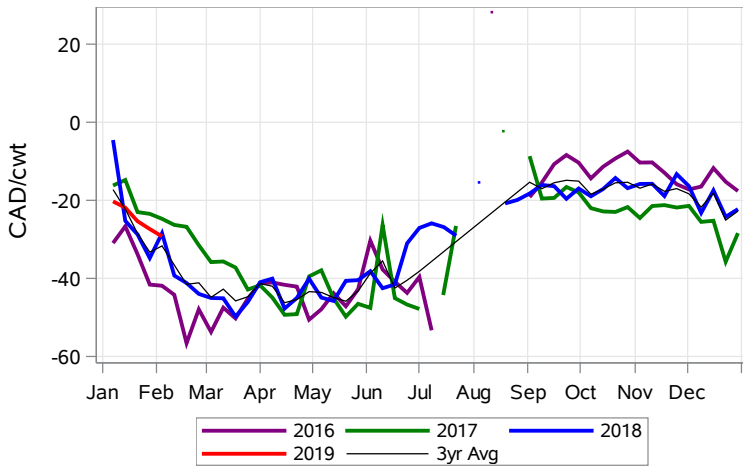
Feeder Cash to Futures Basis SaskMan (Week of Feb 4)



Feeder to Calf Spread (Week of Feb 4)



Feeder to Calf Spread Alberta (Week of Feb 4)



Feeder to Calf Spread SaskMan (Week of Feb 4)

