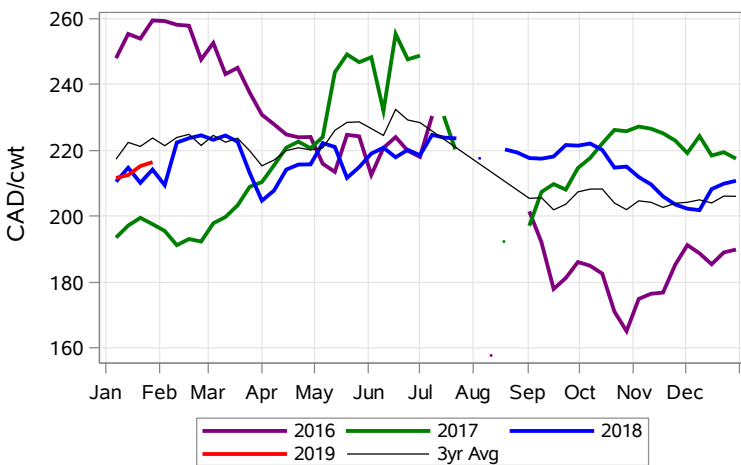


While many factors influence livestock prices, the following are some of the key market indicators that may be helpful when making your WCPIP purchasing decisions.

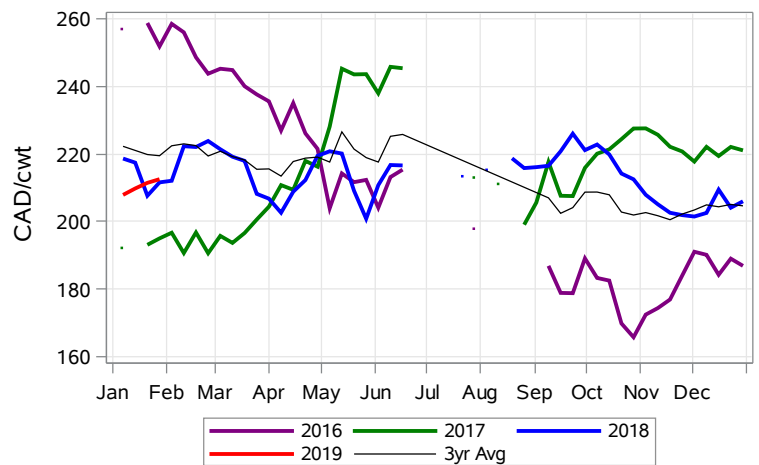
Calf Settlement Index (Week of Jan 28)



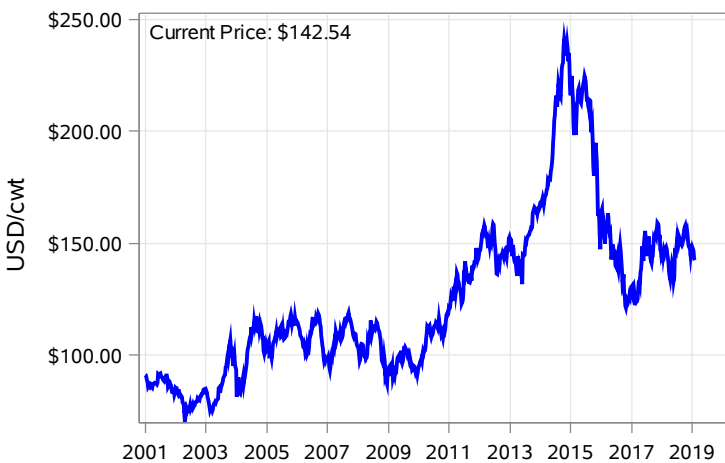
Calf Alberta Settlement Index (Week of Jan 28)



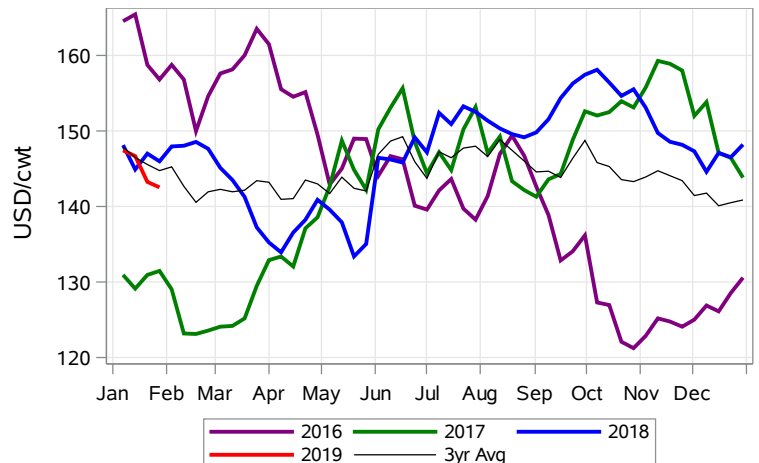
Calf SaskMan Settlement Index (Week of Jan 28)



Nearby Feeder Futures Price (Week of Jan 28)



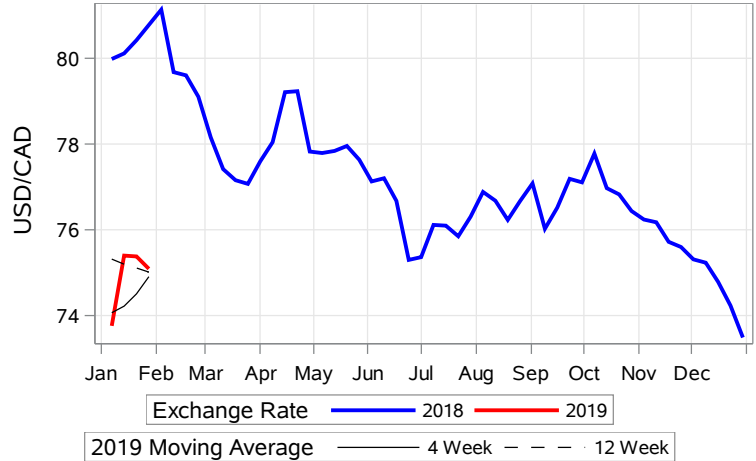
Nearby Feeder Futures Price (Week of Jan 28)



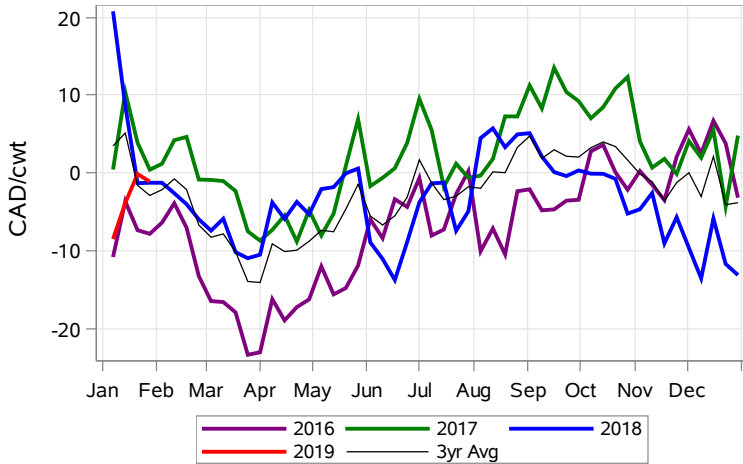
USD/CAD Exchange Rate



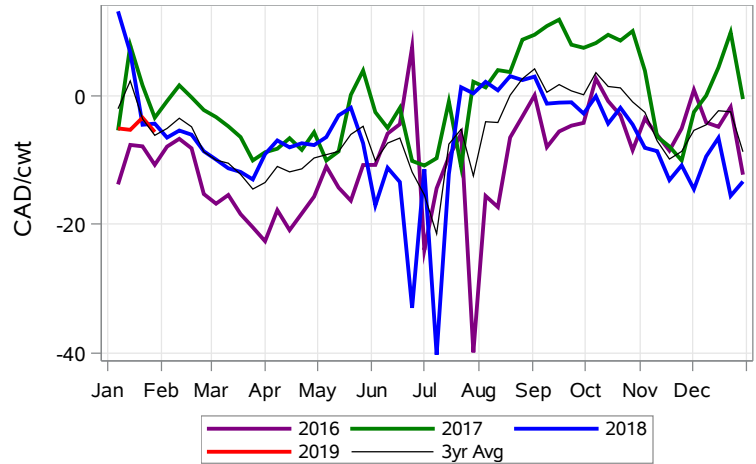
USD/CAD Exchange Rate with Moving Average



Feeder Cash to Futures Basis Alberta (Week of Jan 28)



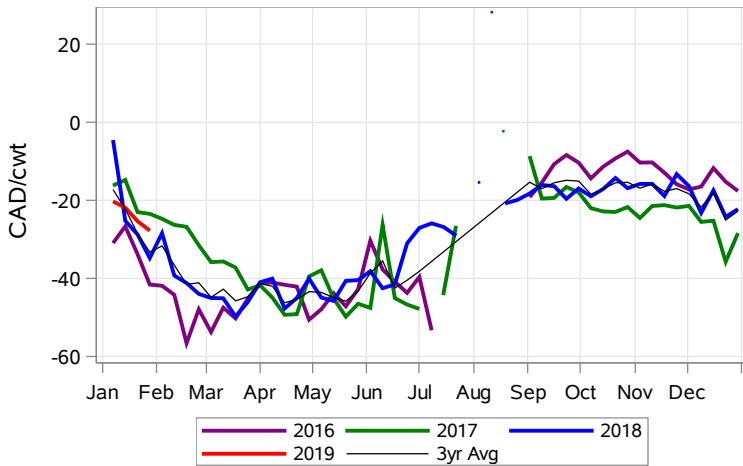
Feeder Cash to Futures Basis SaskMan (Week of Jan 28)



Feeder to Calf Spread (Week of Jan 28)



Feeder to Calf Spread Alberta (Week of Jan 28)



Feeder to Calf Spread SaskMan (Week of Jan 28)

