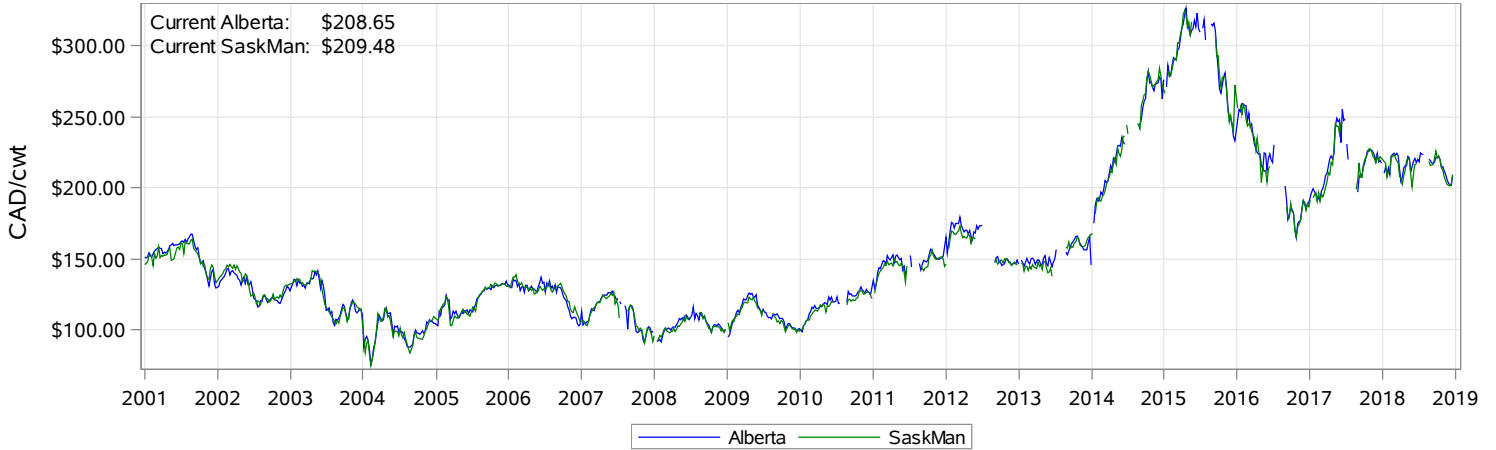
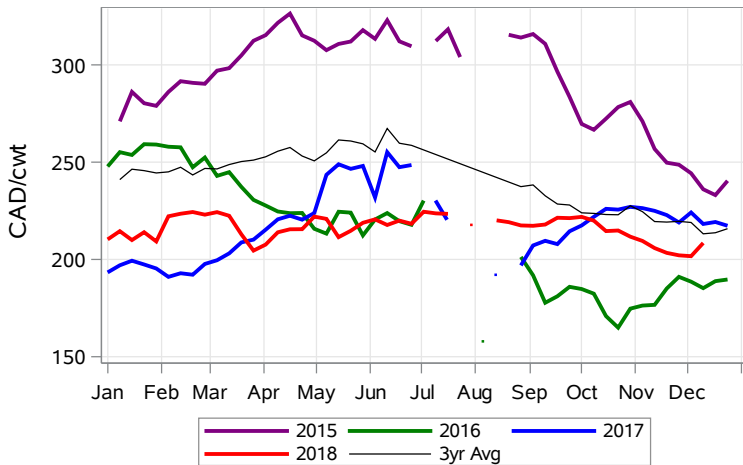


While many factors influence livestock prices, the following are some of the key market indicators that may be helpful when making your WCPIP purchasing decisions.

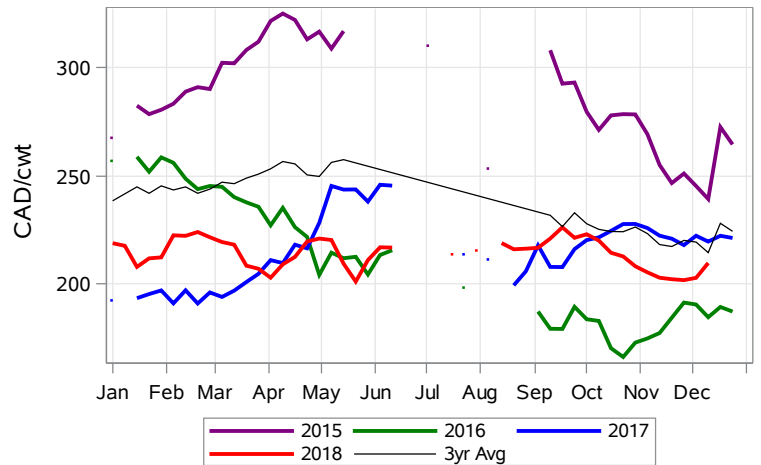
Calf Settlement Index (Week of Dec 17)



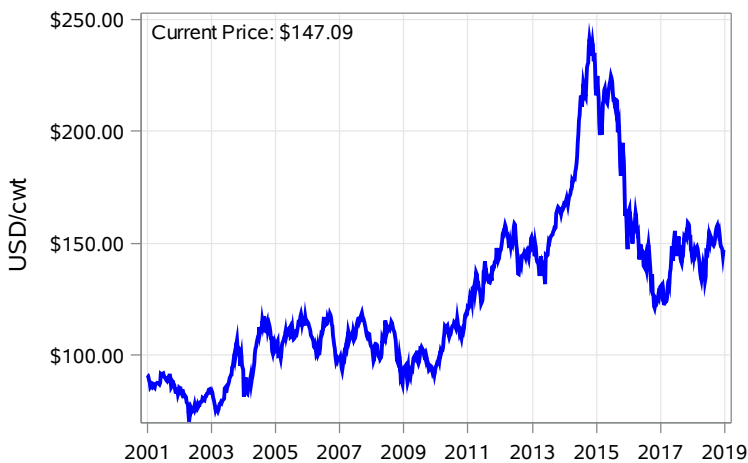
Calf Alberta Settlement Index (Week of Dec 17)



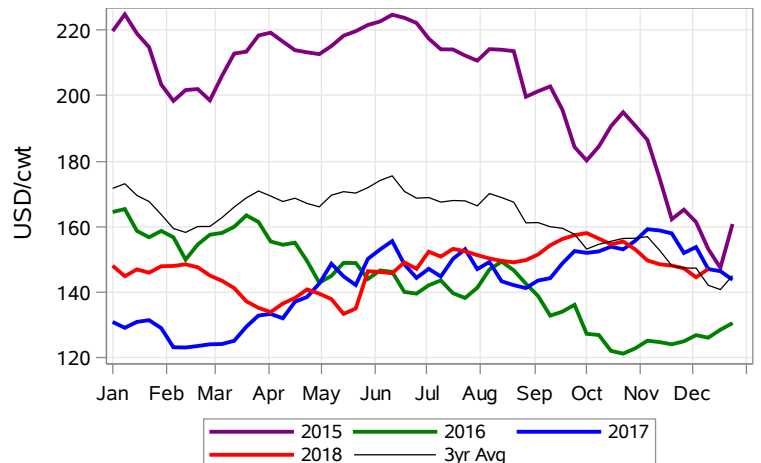
Calf SaskMan Settlement Index (Week of Dec 17)



Nearby Feeder Futures Price (Week of Dec 17)



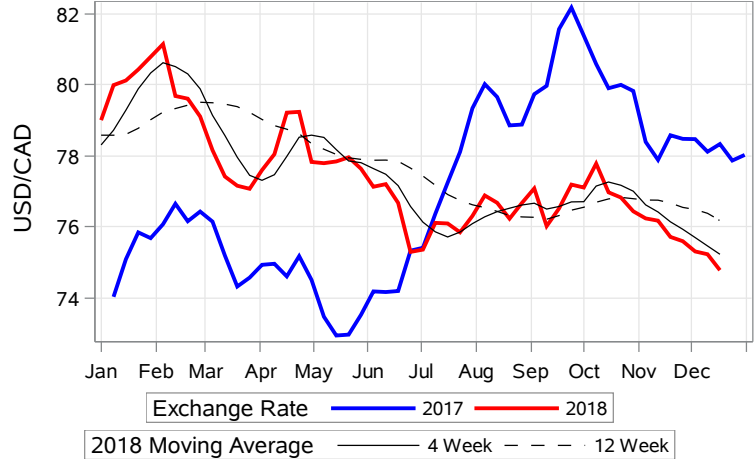
Nearby Feeder Futures Price (Week of Dec 17)



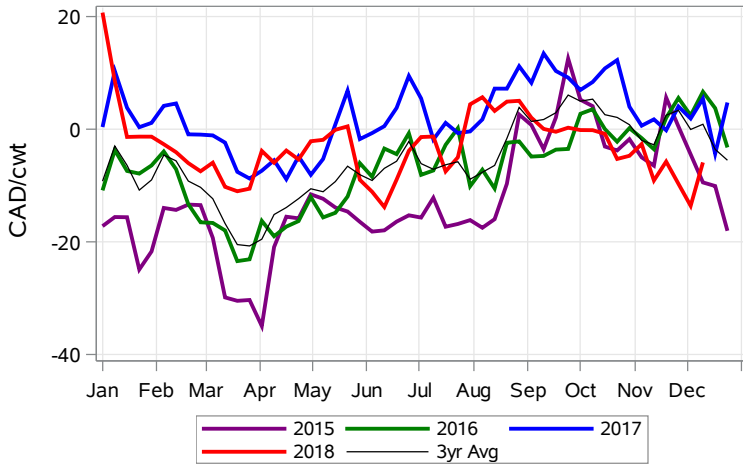
USD/CAD Exchange Rate



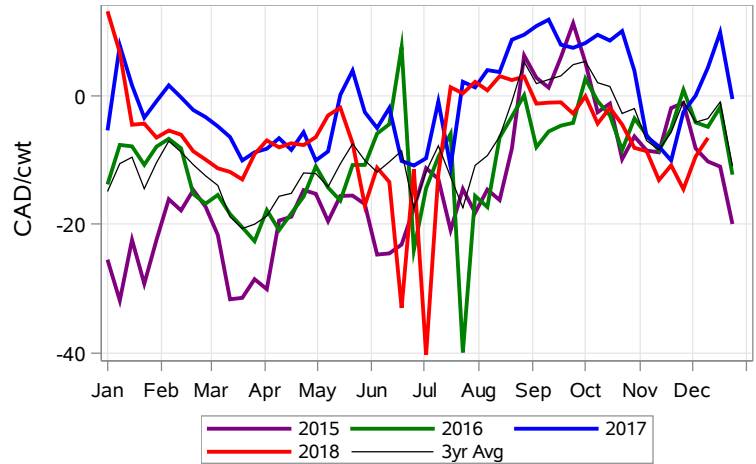
USD/CAD Exchange Rate with Moving Average



Feeder Cash to Futures Basis Alberta (Week of Dec 17)



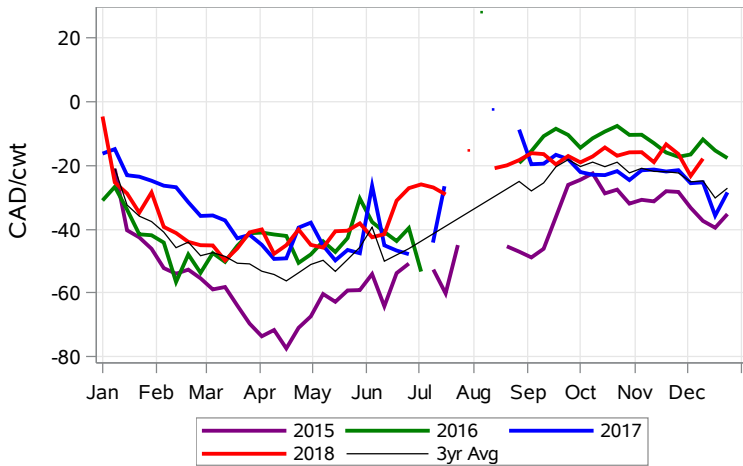
Feeder Cash to Futures Basis SaskMan (Week of Dec 17)



Feeder to Calf Spread (Week of Dec 17)



Feeder to Calf Spread Alberta (Week of Dec 17)



Feeder to Calf Spread SaskMan (Week of Dec 17)

