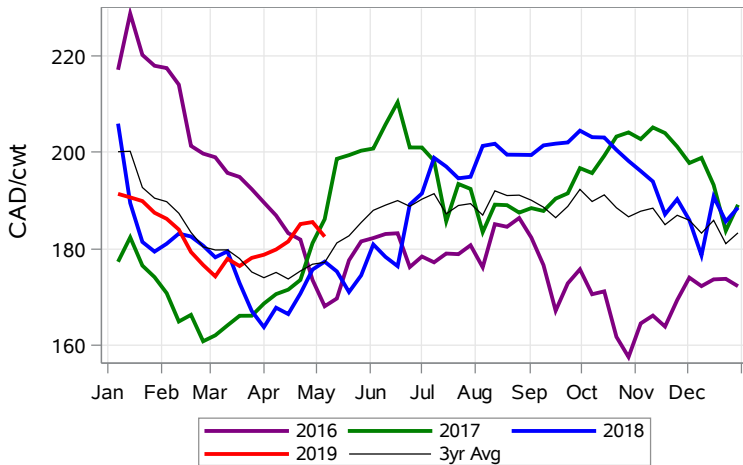


While many factors influence livestock prices, the following are some of the key market indicators that may be helpful when making your WCPIP purchasing decisions.

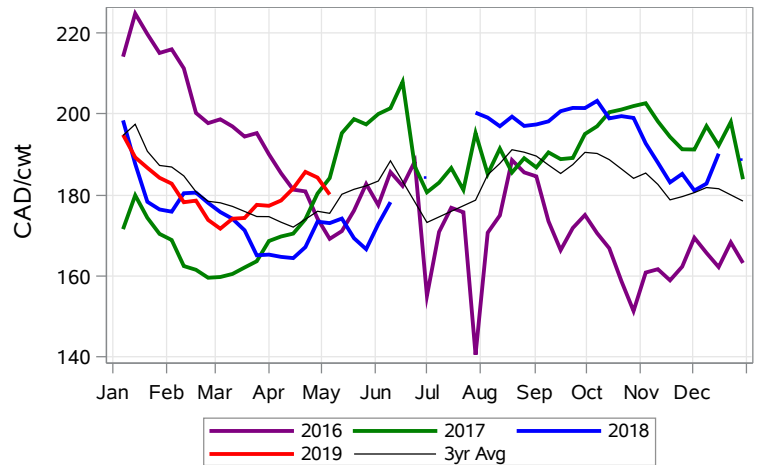
Feeder Settlement Index (Week of May 6)



Feeder Alberta Settlement Index (Week of May 6)



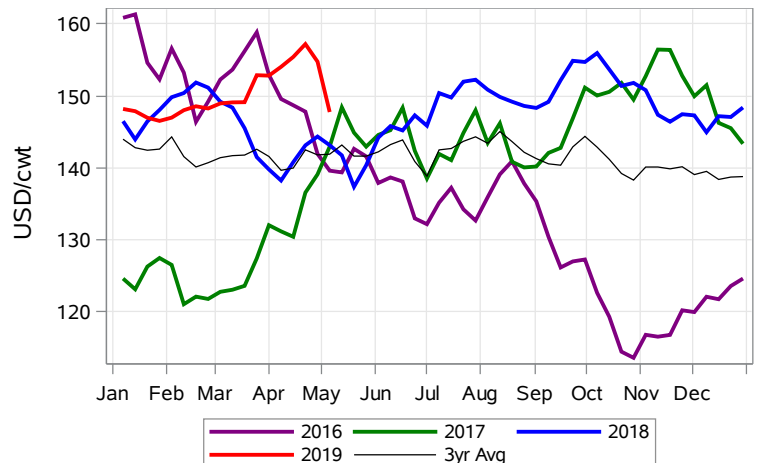
Feeder SaskMan Settlement Index (Week of May 6)



Nearby Feeder Futures Price (Week of May 6)



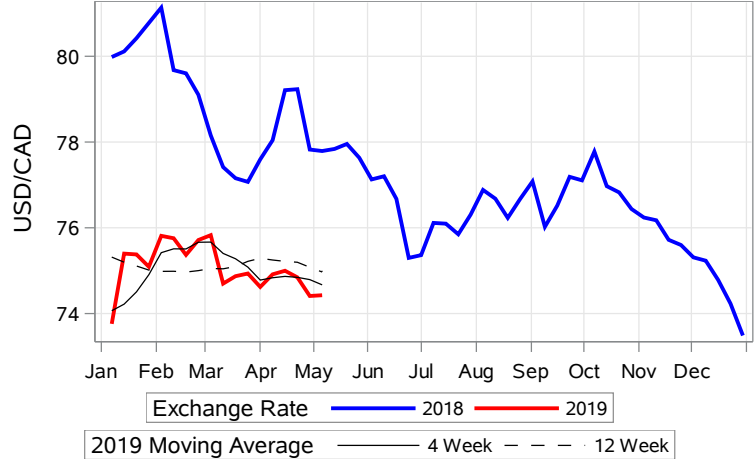
Nearby Feeder Futures Price (Week of May 6)



USD/CAD Exchange Rate



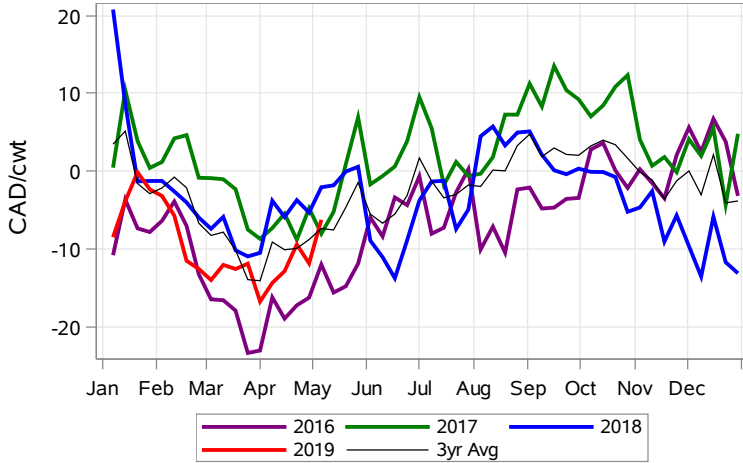
USD/CAD Exchange Rate with Moving Average



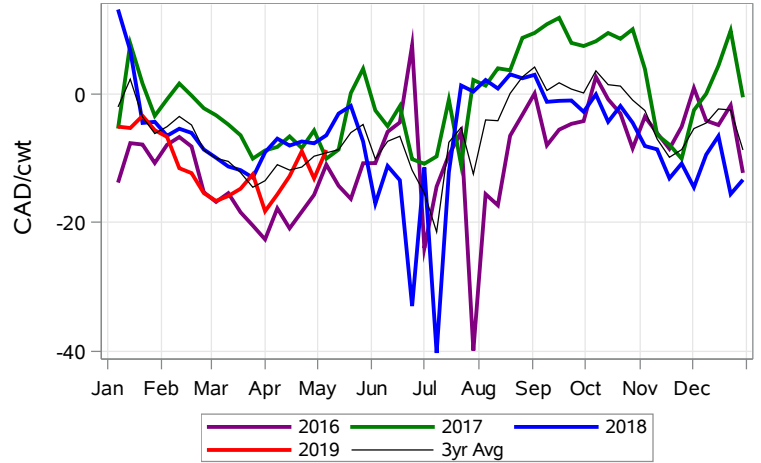
Feeder Cash to Futures Basis (Week of May 6)



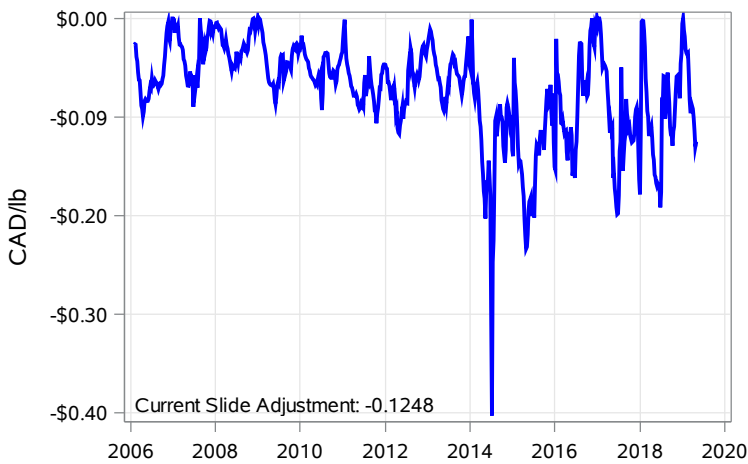
Feeder Cash to Futures Basis Alberta (Week of May 6)



Feeder Cash to Futures Basis SaskMan (Week of May 6)



Slide Adjustment 750-950lbs Alberta (Week of May 6)



Feeder Slide Adjustment Alberta (Week of May 6)

